

DENTALEZ

Connecting innovation to care



2025

Utility Catalog

UTILITY

Compressors	128
Ramvac Compressors	128
Dry Vacuums	131
Dry Vacuums	131
Badger LF	133
Tanks	134
15 Gallon and 30 Gallon Tanks	134
InfiniTank	134
Wet Vacuums	135
Barracuda	135
Maintenance	137
Compressor and Vacuum Maintenance	137
Utility Room Accessories	138
Remote Panels	138
Master Water Control Valve	138
Steel Frame Stands	138
Amalgam Separator	139
VACHECK / FLOWCHECK	139
SlugBuster	139
Quick Reference Guide	140
Utility Warranty	142
DSX Sales Team	143

Compressors

Dry Vacuums

Tanks

Wet Vacuums

Maintenance

Utility Room
Accessories

Quick
Reference
Guides

Warranty

Sales Reps

DENTALEZ

Connecting innovation to care

DENTALEZ is a proven leader, dedicated to providing innovative and trusted products, service, and support. We empower healthcare professionals to maximize their operations for increased patient care.

Powered by an easy-to-use and intuitive dashboard, you will know about potential utility preventative maintenance – anytime, anywhere, so you can be prepared for anything.

With Aeras Intel, you will have one less thing to worry about.

Compressors

Dry Vacuums

Tanks

Wet Vacuums

Maintenance

Utility Room
Accessories

Quick
Reference
Guides

Warranty

Sales Reps

Ramvac

UTILITY



Compressors

Dry Vacuums

Tanks

Wet Vacuums

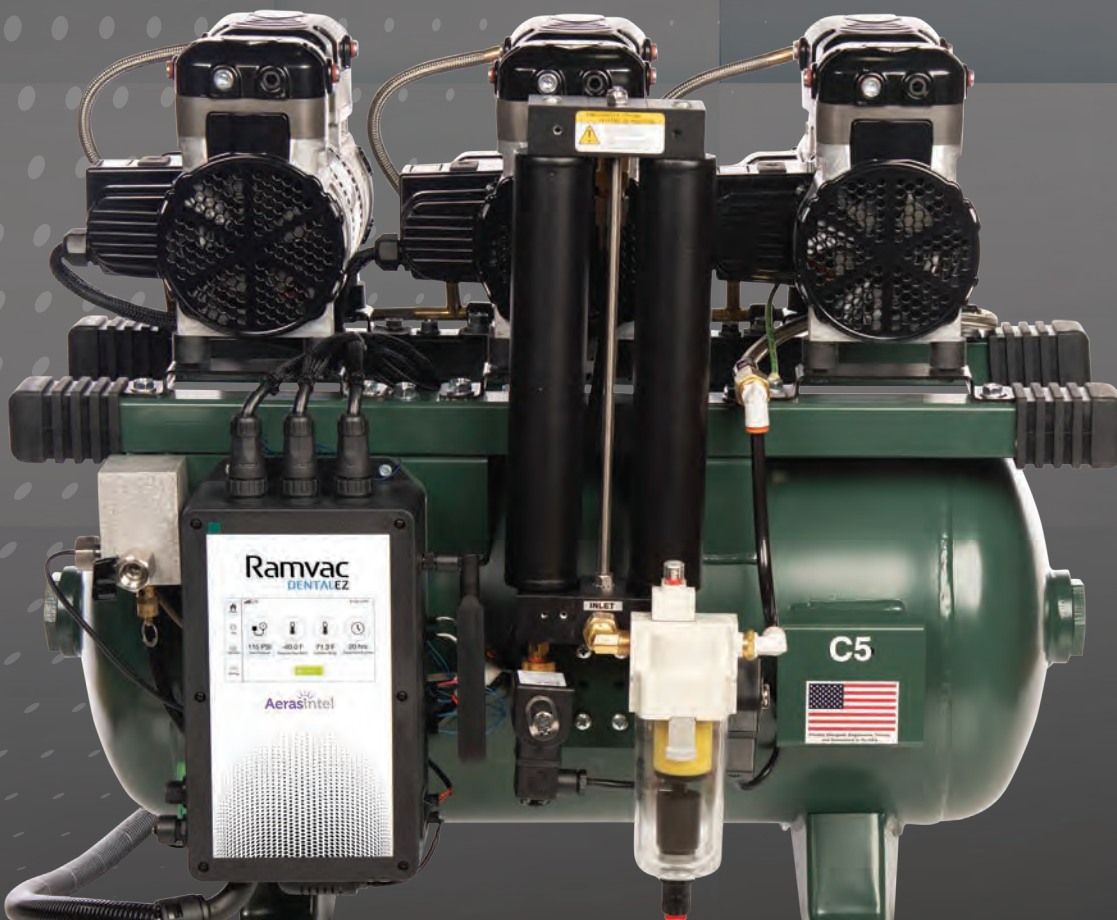
Maintenance

Utility Room
Accessories

Quick
Reference
Guides

Warranty

Sales Reps



PROTECT YOUR REVENUE WITH **LESS DOWNTIME!**

Ramvac Reliability with Aeras Intel



Sound shields are now options for all compressor models to reduce noise in your utility room.



Monitor ambient room conditions and maintenance needs to make sure your office is running efficiently long term.



Keep your practice running with the reliability of oil lubricated Ramvac Dry Vacuums.



Every Ramvac Compressor & Dry Vacuum with Aeras Intel comes standard with smart monitoring.

Register after purchase to take advantage & make your practice smarter!



AERAS, Inc. is a separate corporation from DENTALEZ, Inc.

Compressors

Dry Vacuums

Tanks

Wet Vacuums

Maintenance

Utility Room Accessories

Quick Reference Guides

Warranty

Sales Reps

Ramvac

DENTALEZ

KNOW BEFORE AT NO CHARGE!

Nomenclature Key

Series Name	Max Number of Users	Max Input Power
C = Ramvac® Compressor	3 = up to 3 users	12 = 115 volts or 230v
SS = Sound Shield included	5 = up to 5 users	2 = 230 volts
	8 = up to 8 users	
	12 = up to 12 users	
	18 = up to 18 users	

Sizing Guide

Model Number	Description	Number of Users	Number of Heads	Sound Shield
C3-12	Ramvac 3 Compressor	3	2	8658-016 (x2)
C3-12SS	Ramvac 3 Compressor w/Sound Shield	3	2	Included
C5-12	Ramvac 5 Compressor	5	3	8658-016 (x3)
C5-12SS	Ramvac 5 Compressor w/Sound Shield	5	3	Included
C8-2	Ramvac 8 Compressor	8	2	8625-022 (x2)
C8-2SS	Ramvac 8 Compressor w/Sound Shield	8	2	Included
C12-2	Ramvac 12 Compressor	12	2	8625-022 (x2)
C12-2SS	Ramvac 12 Compressor w/Sound Shield	12	2	Included
C18-2	Ramvac 18 Compressor	18	3	8625-022 (x3)
C18-2SS	Ramvac 18 Compressor w/Sound Shield	18	3	Included



Dry Vacuums

Tanks

Wet Vacuums

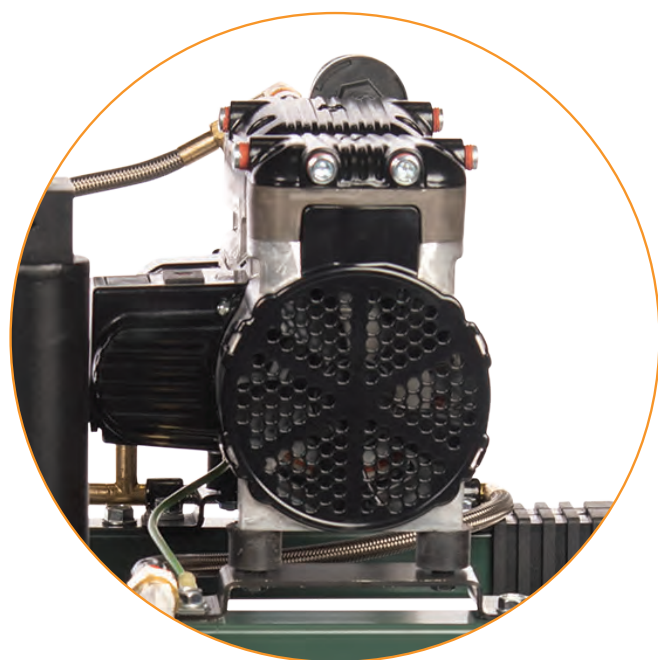
Maintenance

Utility Room
AccessoriesQuick
Reference
Guides

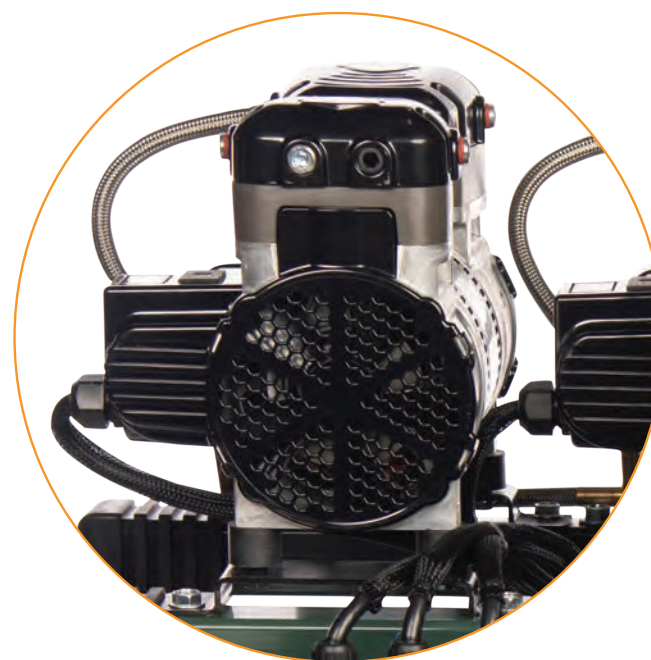
Warranty

Sales Reps

Ramvac Compressor without sound shield



Ramvac Compressor with 1/2 hp sound shield



NOTES:

Note for all compressors: Pressure is 85-115 PSI. High-Pressure Mode is 105-125 PSI.
Pump Up Cycle Time, 85 to 115 PSI (Sec) is 40-60.

TABLE OF CONTENTS

Electrical Requirements

Model Number	Description	Voltage	Amps	Breaker Size	Total HP
C3-12	Ramvac 3 Compressor	115v / 230v	12 / 6.1	15 amp	1.0
C3-12SS	Ramvac 3 Compressor w/Sound Shield	115v / 230v	12 / 6.1	15 amp	1.0
C5-12	Ramvac 5 Compressor	115v / 230v	17.6 / 9	20 / 15 amp	1.5
C5-12SS	Ramvac 5 Compressor w/Sound Shield	115v / 230v	17.6 / 9	20 / 15 amp	1.5
C8-2	Ramvac 8 Compressor	230v	16	20 amp	4
C8-2SS	Ramvac 8 Compressor w/Sound Shield	230v	16	20 amp	4
C12-2	Ramvac 12 Compressor	230v	21	30 amp	4
C12-2SS	Ramvac 12 Compressor w/Sound Shield	230v	21	30 amp	4
C18-2	Ramvac 18 Compressor	230v	30.5	40 amp	6
C18-2SS	Ramvac 18 Compressor w/Sound Shield	230v	30.5	40 amp	6

Weight and Dimensions

Model Number	Description	Weight (lbs)	Dimensions W x D x H (in)	Dimensions w Sound Shield W x D x H (in)	Tank Size (Gallon)
C3-12	Ramvac 3 Compressor	136	30" x 21" x 26"	NA	12
C3-12SS	Ramvac 3 Compressor w/Sound Shield	136	NA	30" x 20" x 26"	12
C5-12	Ramvac 5 Compressor	149	30" x 21" x 26"	NA	12
C5-12SS	Ramvac 5 Compressor w/Sound Shield	149	NA	30" x 20" x 26"	12
C8-2	Ramvac 8 Compressor	230	35" x 25" x 31"	NA	20
C8-2SS	Ramvac 8 Compressor w/Sound Shield	230	NA	35" x 25" x 31"	20
C12-2	Ramvac 12 Compressor	230	35" x 25" x 31"	NA	20
C12-2SS	Ramvac 12 Compressor w/Sound Shield	230	NA	35" x 25" x 31"	20
C18-2	Ramvac 18 Compressor	335	41" x 29" x 32"	NA	30
C18-2SS	Ramvac 18 Compressor w/Sound Shield	335	NA	41" x 29" x 32"	30

Ramvac Compressors



**Ramvac 3
Compressor**

Part Number C3-12



**Ramvac 3
Compressor
with Sound Shield**

Part Number C3-12SS



**Ramvac 5
Compressor**

Part Number C5-12



**Ramvac 5
Compressor
with Sound Shield**

Part Number C5-12SS

NOTES:

Note for all compressors: Pressure is 85-115 PSI. High-Pressure Mode is 105-125 PSI.
Pump Up Cycle Time, 85 to 115 PSI (Sec) is 40-60.

[TABLE OF CONTENTS](#)

Dry Vacuums

Tanks

Wet Vacuums

Maintenance

Utility Room
Accessories

Quick
Reference
Guides

Warranty

Sales Reps

Ramvac Compressors



**Ramvac 8
Compressor**

Part Number C8-2



**Ramvac 8
Compressor
with Sound Shield**

Part Number C8-2SS



**Ramvac 12
Compressor**

Part Number C12-2



**Ramvac 12
Compressor
with Sound Shield**

Part Number C12-2SS



**Ramvac 18
Compressor**

Part Number C18-2



**Ramvac 18
Compressor
with Sound Shield**

Part Number C18-2SS

See page 137 for maintenance parts.

Dry Vacuums

Tanks

Wet Vacuums

Maintenance

Utility Room
Accessories

Quick
Reference
Guides

Warranty

Sales Reps



KNOW BEFORE AT NO CHARGE!

Nomenclature Key

Series Name	Max Number of Users	Max Input Power	Tank Included
RV = Ramvac® Dry Vac	4 = up to 4 users	12 = 115v or 230v	T = tank included
	5 = up to 5 users	2 = 230v	
	7 = up to 7 users	23 = 230v 3 phase	
	10 = up to 10 users	43 = 460v 3 phase	
	12 = up to 12 users		



Sizing Guide: 1 HVE = 1 user, 1 SE = 1/5 user, Nitrous scavenger = 1/4 user

Sizing Guide

Model Number	Description	Users	Breaker Size
RV4-12T	Ramvac 4 Dry Vacuum System (Bulldog QT 2)	4	15 amp
RV5-2T	Ramvac 5 Dry Vacuum System (Bison 3)	5	20 amp
RV5-23T	Ramvac 5 Dry Vacuum System (Bison 3)	5	15 amp
RV7-2T	Ramvac 7 Dry Vacuum System (Bison 5)	7	20 amp
RV7-23T	Ramvac 7 Dry Vacuum System (Bison 5)	7	15 amp
RV10-2T	Ramvac 10 Dry Vacuum System (Bison 7)	10	20 amp
RV10-23T	Ramvac 10 Dry Vacuum System (Bison 7)	10	15 amp
RV12-23T	Ramvac 12 Dry Vacuum System (Bison 9)	12	20 amp
RV12-43T	Ramvac 12 Dry Vacuum System (Bison 9)	12	15 amp

All Ramvac Vacuum Systems (pump and tank) except RV4-12T include a platform (575056) for stacking.

Electrical Requirements

Model Number	Description	Output Power	Input Power	Max Amps
RV4-12T	Ramvac 4 Dry Vacuum System (Bulldog QT 2)	1 hp (0.745kW)	115v or 230v, 1 ph 60 Hz	9 @ 115v, 4.5 @ 230v
RV5-2T	Ramvac 5 Dry Vacuum System (Bison 3)	3 hp (2.2kW)	230v, 1 ph 60 Hz	16.0 @ 230v
RV5-23T	Ramvac 5 Dry Vacuum System (Bison 3)	3 hp (2.2kW)	230v, 3 ph 60 Hz	8.4 @ 230v
RV7-2T	Ramvac 7 Dry Vacuum System (Bison 5)	3 hp (2.2kW)	230v, 1 ph 60 Hz	16.0 @ 230v
RV7-23T	Ramvac 7 Dry Vacuum System (Bison 5)	3 hp (2.2kW)	230v, 3 ph 60 Hz	8.4 @ 230v
RV10-2T	Ramvac 10 Dry Vacuum System (Bison 7)	3 hp (2.2kW)	230v, 1 ph 60 Hz	16.0 @ 230v
RV10-23T	Ramvac 10 Dry Vacuum System (Bison 7)	3 hp (2.2kW)	230v, 3 ph 60 Hz	8.4 @ 230v
RV12-23T	Ramvac 12 Dry Vacuum System (Bison 9)	5 hp (3.7kW)	230v, 3 ph 60 Hz	13.2 @ 230v
RV12-43T	Ramvac 12 Dry Vacuum System (Bison 9)	5 hp (3.7kW)	460v, 3 ph 60 Hz	6.6 @ 460v

Weight and Dimensions

Model Number	Description	Weight (lbs) Pump only	Dimensions (Pump only) W x D x H (in)	Stacked Dimensions (Pump and Tank) W x D x H (in)
RV4-12T	Ramvac 4 Dry Vacuum System (Bulldog QT 2)	200 lbs	25" x 17" x 28"	29" x 19" x 48"
RV5-2T	Ramvac 5 Dry Vacuum System (Bison 3)	345 lbs	26" x 19" x 31"	33" x 21" x 59"
RV5-23T	Ramvac 5 Dry Vacuum System (Bison 3)	345 lbs	26" x 19" x 31"	33" x 21" x 59"
RV7-2T	Ramvac 7 Dry Vacuum System (Bison 5)	345 lbs	26" x 19" x 31"	33" x 21" x 59"
RV7-23T	Ramvac 7 Dry Vacuum System (Bison 5)	345 lbs	26" x 19" x 31"	33" x 21" x 59"
RV10-2T	Ramvac 10 Dry Vacuum System (Bison 7)	395 lbs	26" x 22" x 31"	33" x 22" x 59"
RV10-23T	Ramvac 10 Dry Vacuum System (Bison 7)	395 lbs	26" x 22" x 31"	33" x 22" x 59"
RV12-23T	Ramvac 12 Dry Vacuum System (Bison 9)	395 lbs	26" x 22" x 31"	33" x 22" x 71"
RV12-43T	Ramvac 12 Dry Vacuum System (Bison 9)	395 lbs	26" x 22" x 31"	33" x 22" x 71"

NOTES: Drain Valve Centerline to Floor

Ramvac Dry Vacuums



Ramvac 4 Dry Vacuum System

Part Number RV4-12T



Ramvac 5 Dry Vacuum System

Part Number RV5-2T



Ramvac 7 Dry Vacuum System

Part Number RV7-2T



Ramvac 10 Dry Vacuum System

Part Number RV10-2T



Ramvac 12 Dry Vacuum System

Part Number RV12-23T

Description	Part Number	Description	Part Number
Vacuum Only		Vacuum System (with 30-gal tank and platform)	
Ramvac 4 Dry Vacuum (Bulldog QT 2) 4 User/115V & 230V Single Phase	RV4-12	Ramvac 5 Dry Vacuum System (Bison 3) 5 User 230V Single Phase	RV5-2T30
Ramvac 5 Dry Vacuum (Bison 3) 5 User 230V Single Phase	RV5-2	Ramvac 7 Dry Vacuum System (Bison 5) 7 User 230V Single Phase	RV7-2T30
Ramvac 7 Dry Vacuum (Bison 5) 7 User 230V Single Phase	RV7-2	Ramvac 10 Dry Vacuum System (Bison 7) 10 User 230V Single Phase	RV10-2T30
Ramvac 7 Dry Vacuum (Bison 5) 7 User 230V Three Phase	RV7-23	Ramvac 12 Dry Vacuum System (Bison 9) 12 User 230V Three Phase	RV12-23T
Ramvac 10 Dry Vacuum (Bison 7) 10 User 230V Single Phase	RV10-2	Ramvac 12 Dry Vacuum System (Bison 9) 12 User 460V Three Phase	RV12-43T
Ramvac 10 Dry Vacuum (Bison 7) 10 User 230V Three Phase	RV10-23		
Ramvac 12 Dry Vacuum (Bison 9) 12 User 230V Three Phase	RV12-23		
Ramvac 12 Dry Vacuum (Bison 9) 12 User 460V Three Phase	RV12-43		

See page 137 for maintenance parts.

NOTES:
RV5-2T, RV7-2T, RV10-2T and RV12-23T include a platform.

Badger™ LF



The efficient, LubeFree dry vacuum system

- Compact LubeFree rotary vane pump with integrated 5 gallon tank
- Dental office can transition easily from wet to dry vacuum
- Open frame design means quick maintenance
- Saves 200,000 gallons of water annually
- 5 gallon polyethylene tank
- 2 year system warranty and 5 year pump warranty

Badger LF Dry Vacuum

Part Number BADGLF2

Badger Specifications

Power Requirements		Pump Specifications	
Users	4	HP	1.5 HP 1,200 rpm
Voltage	208-230 VAC, Single Phase	Weight	Unit: 175lbs Shipping: 195lb
Full Load	6.2A	Maximum Vacuum	15 in Hg
Frequency	60 Hz	Breaker Size	15amp
Exhaust Vent	2"		
Dimensions:	W25"xD18"xH24"		

Ramvac Tanks



15 Gallon Tank**

Part Number A575015



30 Gallon Tank**

Part Number A575030

- Store liquids and debris removed from the treatment room
- Tanks must be sized to correctly match the volume of liquids and debris removed during a vacuum operating cycle.

Specifications	15 Gallon	30 Gallon
Treatment Rooms*	1-6	7-12
W	29"	29"
D	19"	19"
H	24"	36"

Description	Part Number
-------------	-------------

Additional Options	
Ramvac Vacuum Sizes 5-12 Platform	575056
Suspension Set	575215
12" Height Extender	575212
Auxiliary Vacuum Adapter	590504

Ramvac Infini Tanks



Ramvac Infini Tank

Part Number A575080

InfiniTanks

- Simple maintenance free design
- Drains without vacuum interruption
- Significantly reduces the size and number of separating tanks
- Completely automated to provide worry free operation

Specifications	InfiniTank	InfiniTank-High Flow
Treatment Rooms*	1-20	1-20
W	29"	55"
D	21"	27"
H	38"	62"

50 Gallon Cylindrical Tank



50 Gallon Cylindrical Tank

Part Number 590053

50 Gallon Cylindrical Tank

- Easy to Install
- Reliable
- Fiberglass construction won't corrode
- Clean-drain tapered bottom
- Clog resistant drain valve
- Omni-directional drain & pump connections

Specifications	
Treatment Rooms*	13-20
Includes	2" & 3" inlet & vacuum fittings, 3 each galvanized pipe legs, and drain valve
OD	26"
H	62"

NOTES:

* This assumes 1 chair per room. For bays, let "rooms"= chairs.

** Ramvac tanks include level sensor and cable interface to Ramvac Vacuum Control with Aeras.

Barracuda™

- **100% Dual Redundancy**
- Brass impeller and housing with sealed motor bearings for long life and chemical resistance
- 1 & 2 HP Water Injected Pump models available to meet a practice's specific requirements
- Optional water recirculator reduces water consumption by about 75%
- Two independent pumps to handle peak loads and back-up protection (Dual only)
- Maintains vacuum in peak work periods (Dual only)
- Provides back-up protection to minimize downtime (Dual only)
- Now with a 5 year limited warranty from date of installation.

Barracuda Single

Product Name	Barracuda CV-101FS	Barracuda CV-101FSW	Barracuda CV-102FS	Barracuda CV-102FSW
Recirculator	N/A	Included	N/A	Included
Horsepower	1x1 HP	1x1 HP	1x2 HP	1x2 HP
Volts	115 / 208-230	115 / 208-230	208-230	208-230
Amps (each motor)	13.2 / 7.2-6.6	13.2 / 7.2-6.6	11.9-10.7	11.9-10.7
Phase	Single	Single	Single	Single
RPM	3450	3450	3450	3450
Ambient Temperature	32°C / 104°F	32°C / 104°F	32°C / 104°F	32°C / 104°F
Cycle	60 Hz	60 Hz	60 Hz	60 Hz
Width	12"	12"	14"	14"
Depth	9"	9"	11"	11"
Height	16"	16"	20"	20"
Shipping Weight	68 lbs.	68 lbs.	78 lbs.	78 lbs.
Typical application	2 Users	2 Users	3 Users	3 Users
Breaker Size	20 amp	20 amp	20 amp	20 amp
Max sealed vacuum	Approximately 20-25 inches Hg Adjustable			



Barracuda CV-101FS

Barracuda Dual

Product Name	Barracuda MC-201FS	Barracuda MC-201FSW	Barracuda MC-202FS	Barracuda MC-202FSW
Recirculator	N/A	Included	N/A	Included
Horsepower	2 x 1 HP	2 x 1 HP	2 x 2 HP	2 x 2 HP
Volts	208-230	208-230	208-230	208-230
Amps (each motor)	7.5 each motor	7.5 each motor	15 each motor	15 each motor
Phase	Single	Single	Single	Single
RPM	3450	3450	3450	3450
Ambient Temperature	32°C / 104°F	32°C / 104°F	32°C / 104°F	32°C / 104°F
Cycle	60 Hz	60 Hz	60 Hz	60 Hz
Width	24"	26"	24"	26"
Depth	17"	20"	17"	20"
Height	24"	24"	24"	24"
Shipping Weight	175 lbs.	175 lbs.	215 lbs.	215 lbs.
Typical application	4 Users	4 Users	6 Users	6 Users
Breaker Size*	15 amp	15 amp	20 amp	20 amp
Max sealed vacuum	Approximately 20-25 inches Hg Adjustable			



Barracuda MC-202FSW

NOTES:
Dimensions do not include recirculator
*Each motor.

Barracuda Single



Barracuda CV-101FS

Part Number 64586121

Barracuda CV-101FSW

Part Number 64586121W

Barracuda CV-102FS

Part Number 64586122

Barracuda CV-102FSW

Part Number 64586122W

Barracuda Dual



Barracuda MC-201FS

Part Number 64586110D

Barracuda MC-201FSW

Part Number 64586110DW

Barracuda MC-202FS

Part Number 64586211D

Barracuda MC-202FSW

Part Number 64586211DW



NEW STYLE WITH RELAY BOX
For use with wet pumps with serial numbers starting with "V"



OLD STYLE NO RELAY BOX
For use with wet pumps with serial numbers starting with "S"

Description	Part Number
Water Recirculators	
WR-100 - Water Recirculator for CV-101	64592011
WR-100 - Water Recirculator for CV-102	64592012
WR-100 - Water Recirculator for MC-201 & MC-202 Pumps	64592005
Cleaner for Water Recirculator (40oz. container with 1oz. scoop)	64568129
Water Separator	
AM-200 - Air/Water or Nitrous Oxide Separator	64656200
Maintenance / Replacement Pumps	
MC-201FS 1 HP	64586811R
MC-202FS 2 HP	64586812R
MC-201FS with Water Recirculator	64586813R
MC-202FS with Water Recirculator	64586814R
MC-201 Old Style-208/230 Volt (no relay box)	64586100R
MC-202 Old Style-208/230 Volt (no relay box)	64586200R
Accessories	
Top shelf with a 300 lb. Capacity for Stacking Compressors	64568202

COMPRESSORS

Compressor		Sound Shield/Covers	Filter Kit	Dryer	Fresh Air Intake	Buck Boost
Part #	Users	Part #	Part #	Part #	Part #	Part #
C3-12	3	8658-016(X2)	8801-080	004018SP	8658-009	64637006
C3-12SS	3	Included	8801-079	004018SP	8658-014	64637006
C5-12	5	8658-016(X3)	8801-080	004018SP	8658-010	64637006
C5-12SS	5	Included	8801-079	004018SP	8658-015	64637006
C8-2	8	8625-022 (x2)	8801-087	004020SP	8658-012	64637006
C8-2SS	8	Included	8801-101	004020SP	8658-019	64637006
C12-2	12	8625-022 (x2)	8801-087	004020SP	8658-012	64637013
C12-2SS	12	Included	8801-101	004020SP	8658-019	64637013
C18-2	18	8625-022 (x3)	8801-087	005413SP	8658-013	64637013
C18-2SS	18	Included	8801-100	004020SP	8658-020	64637013
C3-2*	3	8543-022	005147SP	004018SP	005002	64637006
C4-1*	4	8543-021	005147SP	004018SP	005002	64637013
C4-2*	4	8543-022	005147SP	004018SP	005002	64637006
C4-12*	4	8658-016(X3)	8801-080	004018SP	8658-010	64637006
C4-12SS*	4	Included	8801-079	004018SP	8658-015	64637006
C6-2*	6	8543-023	005350SP	004020SP	8658-012	64637006
C7-2*	7	8543-023	005148SP	004020SP	005002	64637013
C11-2*	11	8543-024	005149SP	005413SP	005014	64637013
OSP22*	3	8543-022	005147SP	004018SP	005002	64637006
OSP13*	4	8543-021	005147SP	004018SP	005002	64637013
OSP23*	4	8543-022	005147SP	004018SP	005002	64637006
OSP24*	6	8543-023	005350SP	004020SP	005002	64637006
OSP25*	7	8543-023	005148SP	004020SP	005002	64637013
OSP28*	11	8543-024	005149SP	005413SP	005014	64637013
1022*		N/A	004015	004018SP	N/A	N/A
1013D*		N/A	004016	004018SP	N/A	N/A
1023D*		N/A	004016	004018SP	N/A	N/A
1025D*		N/A	004016	004018SP	N/A	N/A
1027D20*		N/A	004016	004019SP	N/A	N/A
1029T*		N/A	004017	004020SP	N/A	N/A
1029T30*		N/A	004017	004020SP	N/A	N/A

*Discontinued

VACUUMS

Vacuum		Service Filter Set	Oil	Buck Boost
Part #	Users	Part #	Part #	Part #
RV4-12	4	003740	7809-001	64637006
RV5-2	5	003750	7809-001	64637006
RV7-2	7	003750	7809-001	64637006
RV10-2	10	003750	7809-001	64637006
RV12-23	12	003750	7809-001	64637006
BADGLF2 prior to BG1307xxx	4	N/A	N/A	64637006
BADGLF2 after BG1307xxx	4	N/A	N/A	64637006
All Wet Vacuums	2-6	64568145	N/A	64637006

Models 550, 1400 and 2800 use DELVAC 15W40 Pack of 4 gallons (part # 310703)

4 user vacuum requires 3 qts of oil, some require 4 qts of oil

NOTES:
Please refer to your User Guide or contact Ramvac Technical Support to determine your Ramvac's oil capacity. Remote air intakes come with sound covers, not with sound shield.

Dry Vacuums

Tanks

Wet Vacuums

Maintenance

Utility Room
Accessories

Quick
Reference
Guides

Warranty

Sales Reps

Remote Panels



Remote Panel #1

Part Number 8-600-131

Remote Panel #2

Part Number 8-600-132

Remote Panel #4

Part Number 8-600-134

Remote Panel #3

Part Number 8-600-133

Remote Panel #5

Part Number 8-600-135

Master Water Control Valves



Master Water Control Valve

Adjustable between 1/2" and 3/4"

Part Number MWC075

Master Water Control Valve with Regulator

Adjustable between 1/2" and 3/4" with regulator

Part Number MWC075R

Master Water Control Valve 1"

Part Number MWC001

NOTES:
Master Water Control Valves now come standard with 24V Solenoid valve and transformer for easy installation to Ramvac master control panels. 115V versions are available; please call 1-866-DTE-INFO for ordering information and availability.

Description	Part Number
-------------	-------------

Replacement Cartridges

AP110 Water Filter for 1/2" and 3/4" Master water controls (2 pack, for older WC series)	64520006
AP801 Water Filter for 1" Master water controls (2 pack, for older WC series)	64520012
Filter Cartridge Kit for new MWC series (2 pack)	8801-040

Description	Part Number
-------------	-------------

Master Water Control Valve Replacement Kits

Solenoid Valve Kit, 3/4"	8801-041
Solenoid Valve Kit, 1"	8801-042
Transformer Kit	8801-043
O-Ring Replacement Kit	8801-044

Adjustable Utility Stand



Adjustable Utility Stand, shown at 62, 50 and 40 inches.

Adjustable Utility Stand

36" W x 24" D x 40"-62" H

Part Number 4060

NOTES:
The Ramvac 18 Compressor (C18-2) with Sound Cover does not fit underneath stand. The RV12 with 30 gallon tank does not fit underneath stand 4060.

Amalgam Separator



NXT Hg5 Amalgam Separator

(1-10 users)
Part Number 8707-002

NXT Hg5 MINI Amalgam Separator

(1-4 users)
Part Number 8707-003

NXT Hg5 High Volume Amalgam Separator (1-10 users)

Part Number 8707-004

NXT Amalgam Separator

- Compact design from Solmetex with internal manifold, ideal for hard to fit areas
- Integrates seamlessly with all Ramvac wet and dry vacuums
- Environmentally friendly packaging
- Simple mail-back recycling program
- Meets all “EPA Dental Rule” requirements
 - Clear system, easy to inspect
 - Two-minute container change out
 - No tools necessary
- ISO 11143 certified by NSF International

NOTES:
Replacement canisters are supplied by Solmetex, to order, please contact them directly. Used collection containers must be delivered to an EPA Certified Recycler. Ramvac is not a recycler. Do NOT send used collection containers to Ramvac.

Description	Part Number
-------------	-------------

Additional Options

Bracket Mount to Ramvac Tank	8562-001
------------------------------	----------

Vacuum Line Cleaner



SlugBuster™

SlugBuster Powder Starter Pack

Includes a 2 gallon mixing jug, two 40 oz. containers of SlugBuster powder with scoop
Part Number 900143

SlugBuster Powder 6 Pack

Includes six 40 oz. containers of SlugBuster powder with scoop
Part Number 900146

SlugBuster Liquid Single Gallon

Includes a single gallon of SlugBuster concentrate and hand pump dispenser
Part Number 900241

SlugBuster Liquid Starter Pack

Includes 2 gallon mixing jug, 1 gallon of SlugBuster concentrate and hand pump dispenser
Part Number 900243

SlugBuster Liquid 4 Pack Case

Includes 4 single gallons of SlugBuster concentrate and 4 hand pump dispensers
Part Number 900246

SlugBuster™

Cleans and deodorizes vacuum hoses, drains, piping, and separators.

VACHECK® / FLOWCHECK®

Check the vacuum performance for your treatment room.



VACHECK
Part Number 800500

VACHECK for Simple Pass-Fail™ indication. (Patent 5,779,472)



FLOWCHECK
Part Number 800501

FLOWCHECK for measurement of flow in SCFM. (Patent 6,925,886 B2)

NOTES:
Please refer to your User Guide or contact Ramvac Technical Support to determine your Ramvac's oil capacity.

Part No	Description
Ramvac Compressors	
C3-12	Ramvac 3 Compressor (Osprey 22)
C3-12SS	Ramvac 3 Compressor w/Sound Shield
C5-12	Ramvac 5 Compressor (Osprey 23)
C5-12SS	Ramvac 5 Compressor w/Sound Shield
C8-2	Ramvac 8 Compressor
C8-2SS	Ramvac 8 Compressor w/Sound Shield
C12-2	Ramvac 12 Compressor (Osprey 28)
C12-2SS	Ramvac 12 Compressor w/Sound Shield
C18-2	Ramvac 18 Compressor
C18-2SS	Ramvac 18 Compressor w/Sound Shield
8543-023	Sound Cover for C6-2, C8-2, C12-2 (with air intake)
8543-024	Sound Cover for C18-2 (with air intake)

Ramvac Vacuums

Vacuum System (with 15 gallon tank and platform)

RV4-12T	Ramvac 4 Dry Vacuum System (Bulldog QT 2) 4 User/115V & 230V Single Phase
RV5-2T	Ramvac 5 Dry Vacuum System (Bison 3) 5 User 230V Single Phase
RV7-2T	Ramvac 7 Dry Vacuum System (Bison 5) 7 User 230V Single Phase
RV7-23T	Ramvac 7 Dry Vacuum System (Bison 5) 7 User 230V Three Phase
RV10-2T	Ramvac 10 Dry Vacuum System (Bison 7) 10 User 230V Single Phase
RV10-23T	Ramvac 10 Dry Vacuum System (Bison 7) 10 User 230V Three Phase

Vacuum System (with 30 gallon tank and platform)

RV5-2T30	Ramvac 5 Dry Vacuum System (Bison 3) 5 User 230V Single Phase
RV7-2T30	Ramvac 7 Dry Vacuum System (Bison 5) 7 User 230V Single Phase
RV10-2T30	Ramvac 10 Dry Vacuum System (Bison 7) 10 User 230V Single Phase
RV12-23T	Ramvac 12 Dry Vacuum System (Bison 9) 12 User 230V Three Phase
RV12-43T	Ramvac 12 Dry Vacuum System (Bison 9) 12 User 460V Three Phase

Vacuum Only

RV4-12	Ramvac 4 Dry Vacuum (Bulldog QT 2) 4 User/115V & 230V Single Phase
RV5-2	Ramvac 5 Dry Vacuum (Bison 3) 5 User 230V Single Phase
RV7-2	Ramvac 7 Dry Vacuum (Bison 5) 7 User 230V Single Phase
RV7-23	Ramvac 7 Dry Vacuum (Bison 5) 7 User 230V Three Phase
RV10-2	Ramvac 10 Dry Vacuum (Bison 7) 10 User 230V Single Phase
RV10-23	Ramvac 10 Dry Vacuum (Bison 7) 10 User 230V Three Phase
RV12-23	Ramvac 12 Dry Vacuum (Bison 9) 12 User 230V Three Phase
RV12-43	Ramvac 12 Dry Vacuum (Bison 9) 12 User 460V Three Phase

Part No	Description
Dry Vacuums	
BADGLF2	Badger LF Dry Vacuum

Tanks

A575015	15-Gallon Tank
A575030	30-Gallon Tank
A575080	Ramvac Infini Tank
590053	50 Gallon Cylindrical Tank

Additional Tank Options

575056	Vacuum Platform
575215	Suspension Set
575212	12" Height Extender
590504	Auxiliary Vacuum Adapter

Wet Vacuums

64586121	Barracuda Single, CV-101FS
64586121W	Barracuda Single, CV-101FSW
64586122	Barracuda Single, CV-102FS
64586122W	Barracuda Single, CV-102FSW
64586110D	Barracuda Dual, MC-201FS
6458611DW	Barracuda Dual, MC-201FSW
64586211D	Barracuda Dual, MC-202FS
6458621DW	Barracuda Dual, MC-202FSW
64592011	WR-100, Water Recirculator for CV-101
64592012	WR-100, Water Recirculator for CV-102
64592005	WR-100, Water Recirculator for MC-201 & MC-202 Pumps
64568129	Cleaner for Water Recirculator (40 oz. container)

Maintenance / Replacement Pumps

64586811R	MC-201FS 1 HP
64586812R	MC-202FS 2 HP
64586813R	MC-201FS with Water Recirculator
64586814R	MC-202FS with Water Recirculator
64586100R	MC-201 Old Style - 208/230 Volt (no relay box)
64586200R	MC-202 Old Style - 208/230 Volt (no relay box)
64568202	Top shelf with a 300 lb. capacity for stacking compressors

Dry Vacuums

Tanks

Wet Vacuums

Maintenance

Utility Room Accessories

Quick Reference Guides

Warranty

Sales Reps

Part No	Description
Remote Panels	
8-600-131	Remote Panel #1
8-600-132	Remote Panel #2
8-600-133	Remote Panel #3
8-600-134	Remote Panel #4
8-600-135	Remote Panel #5
Master Water Control Valves	
MWC075	Adjustable between 1/2" and 3/4"
MWC075R	Adjustable between 1/2" and 3/4" with regulator
MWC001	Master Water Control Valve 1"
Replacement Cartridges	
64520006	AP110 Water Filter for 1/2" and 3/4" Master water controls (2 pack, for older WC series)
64520012	AP801 Water Filter for 1" Master water controls (2 pack, for older WC series)
8801-040	Filter Cartridge Kit for new MWC series (2 pack)
Replacement Kits	
8801-041	Solenoid Valve Kit, 3/4"
8801-042	Solenoid Valve Kit, 1"
8801-043	Transformer Kit
8801-044	O-Ring Replacement Kit
Buck/Boost Transformers	
Facility voltage range w/o transformer 115VAC 230VAC up to 40 AMP Circuit	
64637013	94-98VAC 206-212VAC
Facility voltage range w/o transformer 115VAC 230VAC up to 20 AMP Circuit	
64637006	94-98VAC 206-212VAC
590504	Auxillary Vacuum Adapter
Adjustable Utility Stand	
4060	Adjustable Utility Stand 36"W x 24"D x 40"-62"H
VACHECK / FLOWCHECK	
800500	VACHECK
800501	FLOWCHECK
NXT Amalgam Separator - Hg5 Models	
8707-002	NXT Hg5 Amalgam Separator (1-10 users)
8707-003	NXT Hg5 MINI Amalgam Separator (1-4 users)
8707-004	NXT Hg5 High Volume Amalgam Separator (11-20 users)
8562-001	Bracket Mount to Ramvac Otter Tank

Part No	Description
SlugBuster	
900143	Powder Starter Pack - 2 gallon mixing jug, two 40oz. containers of SlugBuster powder with scoop
900146	Powder 6 Pack - six 40oz. containers of SlugBuster powder with scoop
900241	Liquid Single Gallon - single gallon of SlugBuster concentrate and hand pump dispenser
900243	Liquid Starter Pack - 2 gallon mixing jug, 1 gallon of SlugBuster concentrate, & hand pump dispenser
900246	Liquid 4 Pack Case - 4 single gallons of SlugBuster concentrate, & 4 hand pump dispensers
Compressor Maintenance	
8801-080	Filter Maintenance Kit for Dual Voltage Compressor, C3-12 w/o Sound Shield
8801-079	Filter Maintenance Kit for Dual Voltage Compressor, C3-12SS, C4-12SS w/Sound Shield
8801-100	Filter Maintenance Kit for Compressor C8-2SS, C12-2SS
8801-101	Filter Maintenance Kit for Compressor C18-2SS
005147SP	Filter Maintenance Kit for 3-4 user
005350SP	Filter Maintenance Kit for 6 user
005148SP	Filter Maintenance Kit for 7 user
8801-087	Filter Maintenance Kit for C6, C8, C12, C18
8658-009	Fresh Air Intake Kit, Ramvac Dual Votage C3-12
8658-010	Fresh Air Intake Kit, Ramvac Dual Votage C4-12
8658-012	Fresh Air Intake Kit for C6, C8, C12
8658-013	Fresh Air Intake Kit for C18
8658-019	Fresh Air Intake Kit for C8-2SS and C12-2SS
8658-020	Fresh Air Intake Kit for C18-2SS
005002	Fresh Air Intake Kit for 3-7 user
005014	Fresh Air Intake Kit for 11 user
004018SP	Service Part, Dryer HR2 for 3 & 4 user
004019SP	Service Part, Dryer HR3 for 7 user
004020SP	Service Part, Dryer HR4 for 6 & 7 user
005413SP	Service Part, Dryer HR4L for 11 user
004015	Maintenance Kit for 1022
004016	Maintenance Kit for 1013D, 1023D, 1025D & 1027D20
004017	Maintenance Kit for 1029T and 1029T30
Vacuum Maintenance	
003583	Air Filter Set for 4 user
310705	Oil Filter Element
003740	Service Filter Set for 4 user
003700	Air Filter Set for 5-12 user
003750	User Service Filter Set for 5-12 user
7809-001	Ramvac Synthetic Oil, 6 x 1qt. bottles
710720	"Standard" Air Filter Set
310703	Pump Oil, DELVAC 15W40 pack of 4 gallon for models 550, 1400 and 2800
004691SP	25 Micron Filter Element (for units prior to serial number: BG1307xxx)
005301SP	Badger Service Filter Set (for units later than serial number: BG1307xxx) (requires both filters)

Dry Vacuums

Tanks

Wet Vacuums

Maintenance

Utility Room Accessories

Quick Reference Guides

Warranty

Sales Reps

Ramvac Product Support Services

DENTALEZ and its employees are proud of the products we provide to the dental community. We stand behind these products with a warranty against defects in material and workmanship as provided below and have our own in-house repair facility to service our products. In the event that you experience difficulty with the application or operation of any of our products, please contact our customer service department at our expense at (866)DTE-INFO.

If we cannot resolve the issue by telephone, we will arrange for a representative to contact you or suggest that the product be returned to our factory for inspection.

If product return or repair is required, we will provide you with a Return Authorization number and shipping instructions to return the product to the proper facility. If the product is under warranty, we will ask you to provide proof of purchase such as a copy of your invoice. Please be sure to include the Return Authorization number on the package you are returning. Products returned without a return authorization number cannot be repaired.

Freight costs for product returns are the responsibility of the customer. Products under warranty will be repaired or replaced, at our sole discretion, and returned at our expense. Products outside the warranty limits will be repaired and returned with costs invoiced to the customer. We are not responsible for shipping damages. We will, however, help you file a claim with the freight carrier. Written repair estimates are available.

DENTALEZ warrants all equipment and parts to be free of defects in material and workmanship, under normal usage, under the following terms:

Ramvac

Limited Warranty Period*

Ramvac Compressors	6 Years from date of installation
Ramvac Dry Vacuums	6 years from date of installation / 10 years for pump only
Badger LF Vacuum	2 years from date of installation / 5 years for pump only
Wet Vacuum Systems	5 Years from date of installation
Master Water Control	2 Years from date of installation
NXT Hg5 Amalgam Separator	Warranty from Solmetex, 2 years

Please note the following additional terms of our warranty and return policy:

- This warranty covers manufacturing defects only and does not cover defects resulting from abuse, accidents, misuse, improper handling, cleaning, care or maintenance. Damage resulting from the use of chemicals, cleaners, disinfectants or sterilization is not covered under this warranty nor is normal wear and tear. Failure to follow or observe our operating/use, maintenance and/or installation instructions voids this warranty as does the use of non-authorized parts and repairs made by an unauthorized repair facility.
- Liability is limited to repair or replacement of the defective part(s) or products at our sole discretion. All other liabilities, in particular liability for damages, including, without limitation, special, exemplary, consequential or incidental damages are excluded.
- THIS WARRANTY IS IN LIEU OF ALL OTHER WARRANTIES, EXPRESSED OR IMPLIED, INCLUDING ANY IMPLIED WARRANTIES OF MERCHANTABILITY OR FITNESS FOR A PARTICULAR PURPOSE. NO EMPLOYEE, REPRESENTATIVE OR DEALER IS AUTHORIZED TO CHANGE THIS WARRANTY IN ANY WAY OR TO GRANT ANY OTHER WARRANTY.

Warranty Repairs:

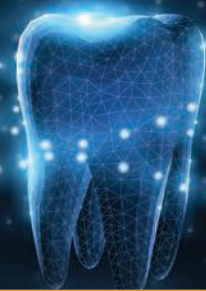
Parts repaired or replaced on a product that is in warranty will be warranted for the duration of that product's original warranty.

Product Returns:

Opened products or product returns more than a year old cannot be returned for credit. There will be a 15% (\$25.00 minimum) restocking charge on all items authorized for return.

NOTES:

*Provided conditions defined in instruction manual are met. DENTALEZ is a registered trademark of DENTALEZ, Inc. Ramvac, Bison, Bulldog, FLOWCHECK, InfiniTank, Ramclean and VACHECK are registered trademarks and Badger, Barracuda, Osprey, and SlugBuster are trademarks of Ramvac Dental Products, Inc. PowerScrub is a trademark of Solmetex, LLC.



DSXe - Equipment (Equipment Sales Specialists) - Forest, Ramvac, Porter, Radiance and Imagine+

Steve Sinclair

Divisional Sales Manager,
East Equipment Sales
ssinclair@dentalez.com
480.639.7064



Rob Depalma

Northeast
rdepalma@dentalez.com
860.993.3518



Mike Geren

Southeast
mgeren@dentalez.com
615.533.8385



Marc Bruckner

New York
mbruckner@dentalez.com
201.321.3906



Mark DeVore

Mid-Atlantic
mdevore@dentalez.com
410.320.6374



Troy Parr

Ohio
tparr@dentalez.com
513.550.3006



Dean Constantinou

Eastern Canada
dconstantinou@dentalez.com
647.203.1126



Phillip Eycke

North & South Carolina
peycke@dentalez.com
919.606.2811



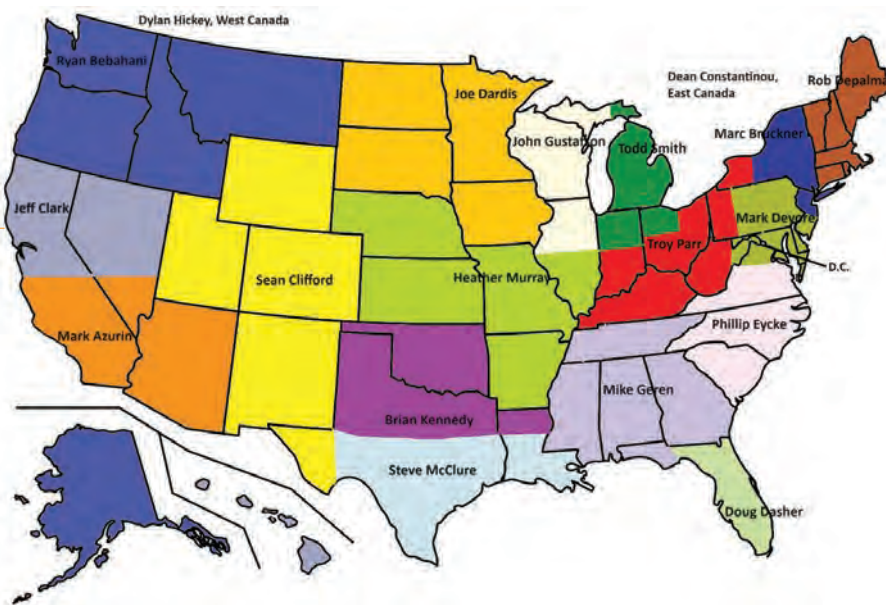
Todd Smith

Michigan
tsmith@dentalez.com
616.581.4879



Doug Dasher

Florida
ddasher@dentalez.com
954.818.2618



Nick Carter

Divisional Sales Manager,
West Equipment Sales
ncarter@dentalez.com
817.583.3145



Mark Azurin

Southern California
mazurin@dentalez.com
562.485.8172



Ryan Behbahani

Pacific Northwest
rbehbahani@dentalez.com
206.595.0952



Joe Dardis

Minnesota
jdardis@dentalez.com
calendly.com/jdardis
651.894.2507



Brian Kennedy

North Texas
bkennedy@dentalez.com
214.663.2465



Jeff Clark

Northern California
jclark@dentalez.com
916.622.4493



John Gustafson

Chicagoland
jgustafson@dentalez.com
847.331.0195



Steve McClure

South Texas
smcclure@dentalez.com
210.445.4191



Sean Clifford

Mountain
sclifford@dentalez.com
303.335.6234



Dylan Hickey

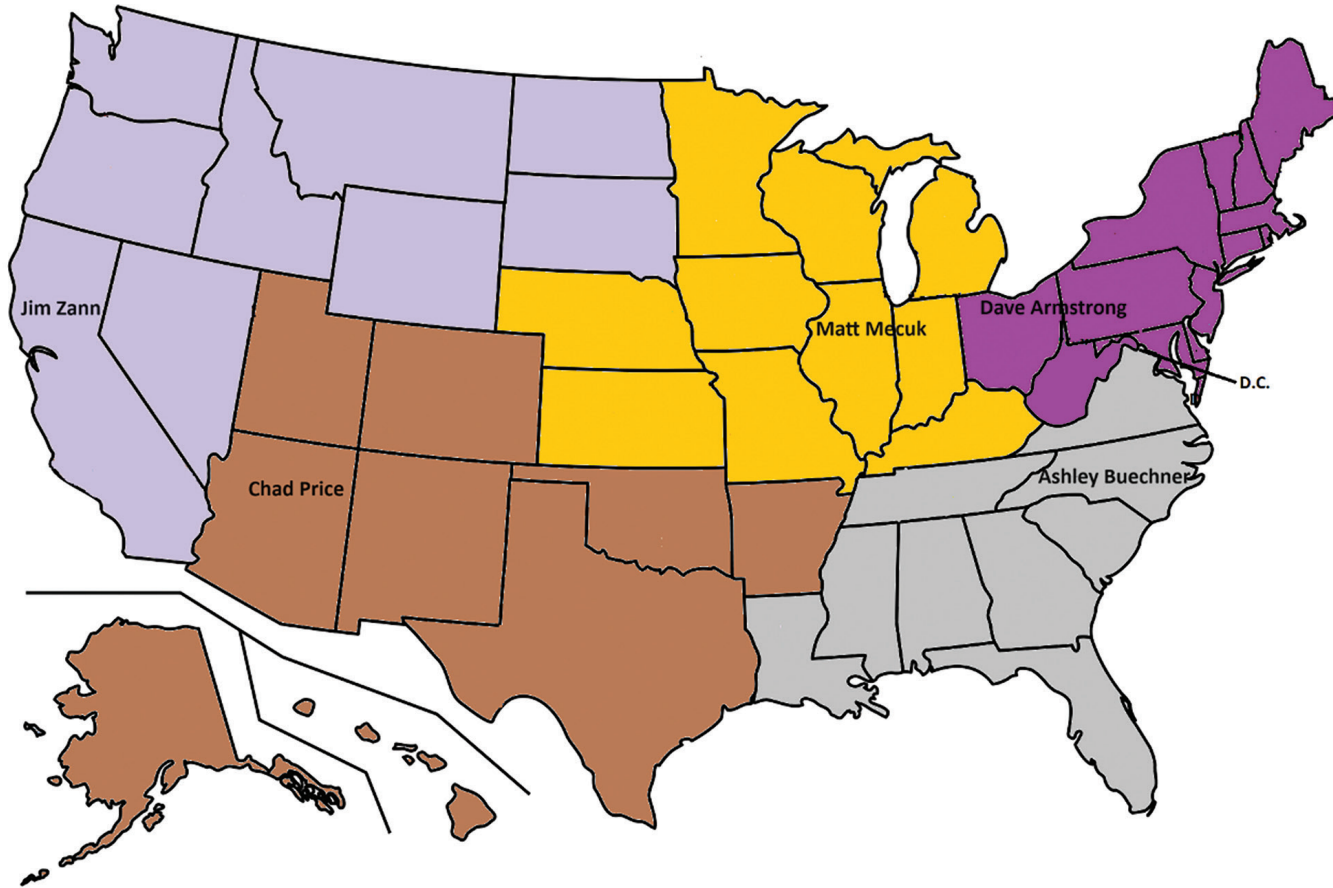
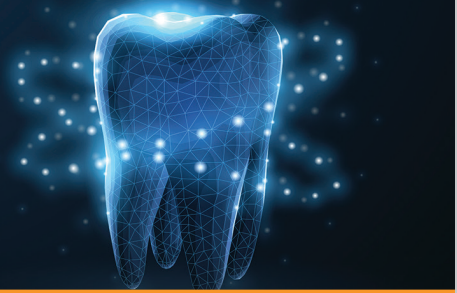
Western Canada
dhickey@dentalez.com
778.846.5149



Heather Murray

Heartland
hmurray@dentalez.com
636.342.0306





DSXi - Institutional (Institutional Sales Specialists)
 Star, Ramvac, Forest, Columbia, Porter, Radiance and Imagine+

Dustin Stember

National Sales Manager, Institutional
dstember@dentalez.com
 913.972.4963



Ashley Buechner

Mid-Atlantic/Southeast
abuechner@dentalez.com
 913.397.3503



Chad Price

Southwest/Texas
cprice@dentalez.com
 805.245.4315



David Armstrong

Northeast/Ohio
darmstrong@dentalez.com
 440-479-3860



Matt Mecuk

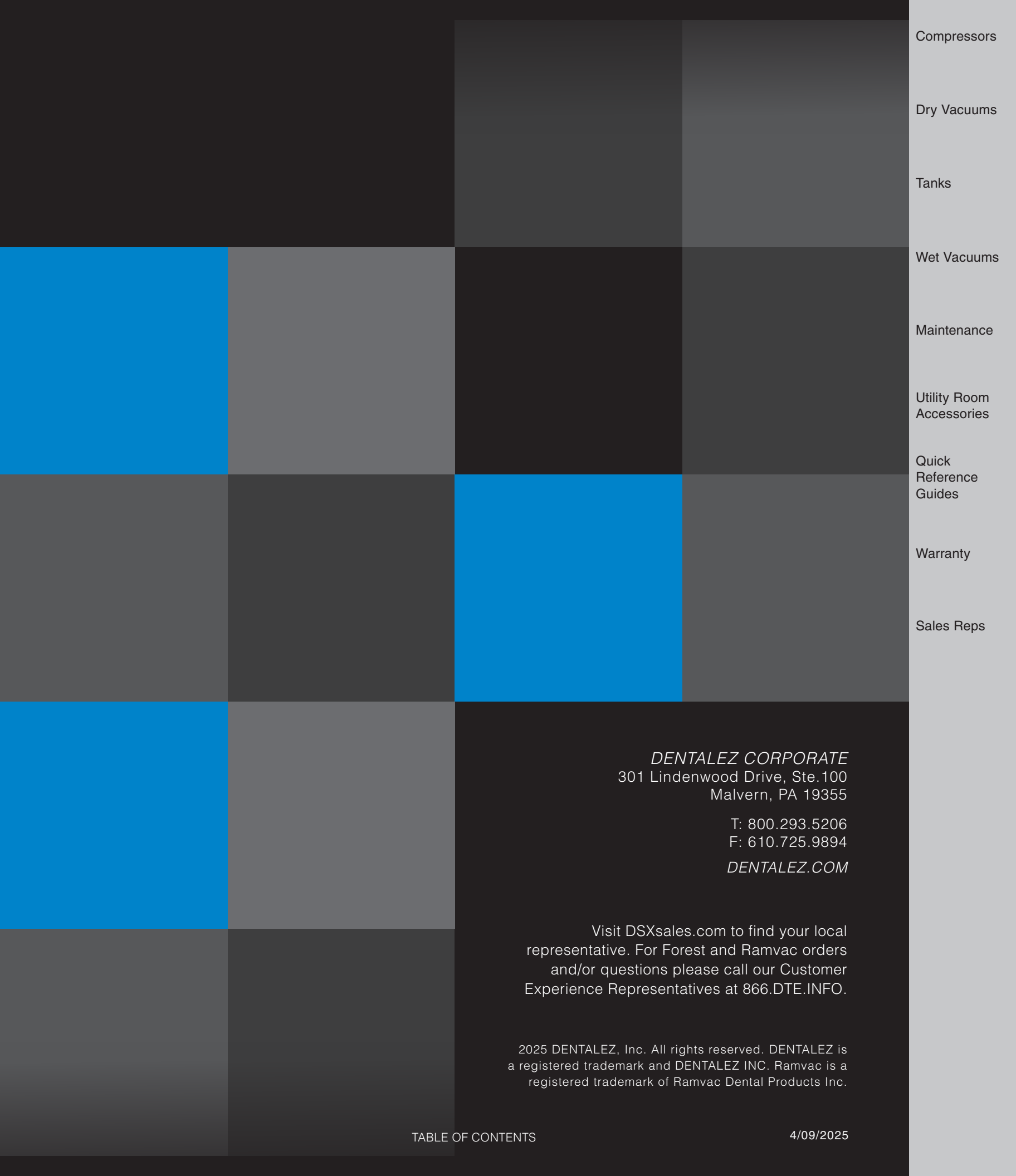
Heartland/Michigan
mecukm1@yahoo.com
 323.348.8536



Jim Zann

California/Pacific Northwest
jzann@dentalez.com
 916.835.2804





Compressors

Dry Vacuums

Tanks

Wet Vacuums

Maintenance

Utility Room
Accessories

Quick
Reference
Guides

Warranty

Sales Reps

DENTALEZ CORPORATE
301 Lindenwood Drive, Ste.100
Malvern, PA 19355

T: 800.293.5206

F: 610.725.9894

DENTALEZ.COM

Visit DSXsales.com to find your local representative. For Forest and Ramvac orders and/or questions please call our Customer Experience Representatives at 866.DTE.INFO.

2025 DENTALEZ, Inc. All rights reserved. DENTALEZ is a registered trademark and DENTALEZ INC. Ramvac is a registered trademark of Ramvac Dental Products Inc.